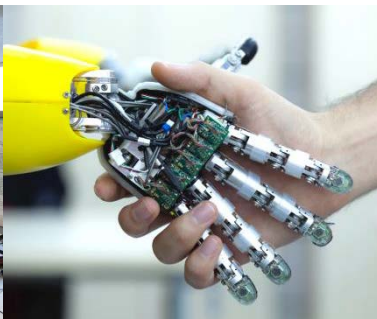
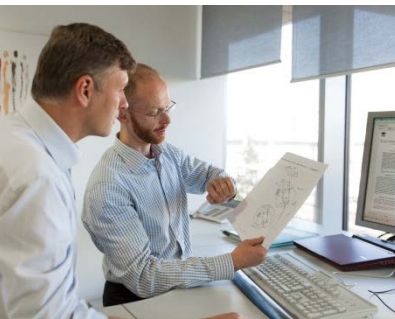


# Global Patent Index (GPI)

**Improve your search result lists completeness using Asian names**



# GPI database content

- GPI uses EPO worldwide data collections (DOCDB, INPADOC)
- Current content: **111 M** publications (**48 M** from CN JP KR)
- Every month: **0,5 M** new publications added (**0,3+ M** from CN JP KR)

# Monitoring using GPI

- Consists of running searches, e.g. monthly or quarterly, and of producing result sets for subsequent analysis/reporting activities
- Applies to **publications available for the first time** in GPI
- **Publications available for the first time** does not necessarily mean **newly published** (deliveries from IP authorities often include recent and less recent publications)
- **Conclusion:** publication dates cannot be used for monitoring purposes

# Monitoring of applicants using GPI

- Recent CN JP KR publications available in GPI usually include applicant names in original language only
- Some less recent CN JP KR publications available in GPI may have applicant names in original language only, and some others may have applicant names in original language and in Latin alphabet
- **Conclusion:** query enrichment with applicant names in Latin alphabet and in Asian languages improves the completeness of your search result lists

# Monitoring queries

Scenario: quarterly monitoring of **Siemens AG** in CN publications

- Query part 1: **DFE** [201806, 201808]  
returns publications added for the first time in GPI between June and August
- Query part 2: **PUC** = CN and **APP** = "Siemens AG" or 西门子公司  
returns CN publications where the applicant is Siemens AG (Latin or zh)
- Monitoring query (combination of part 1 and 2):  
**DFE** [201806, 201808] and **PUC** = CN and **APP** = "Siemens AG" or 西门子公司

**Live demo**

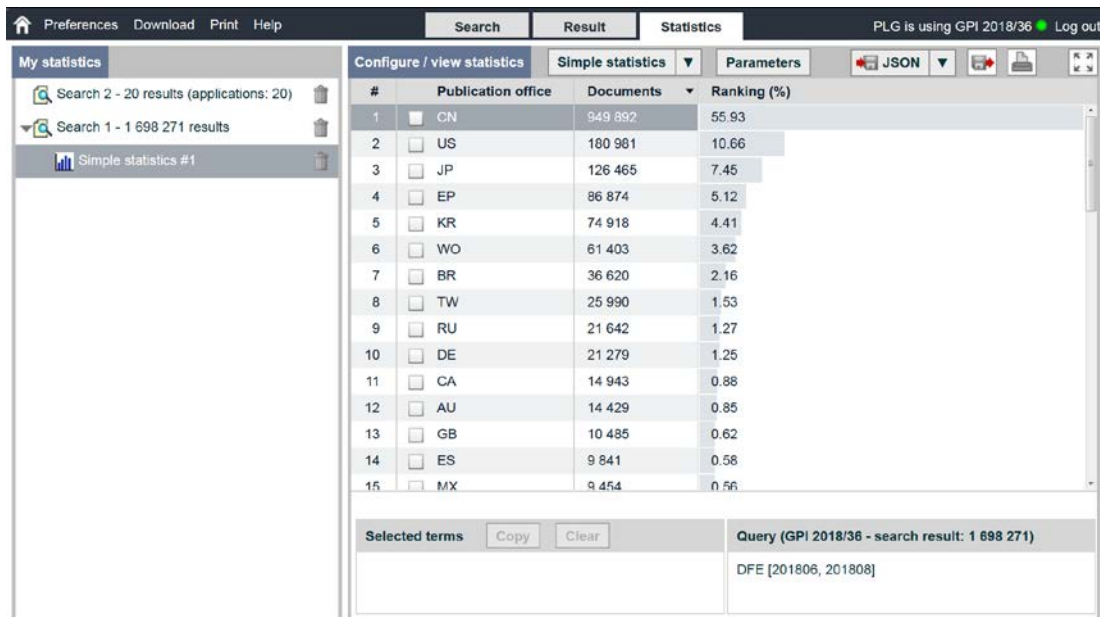
# ANNEX (live demo content)

DFE [201806, 201808]

DFE = date of first exchange, i.e. date publications added for the first time in GPI between June and August this year.

Search run at the earliest on Friday 07/09 after 12:00 CET

Simple statistics on the search result set with parameter “Publication office”:



The screenshot shows the ANNEX search results interface. The top navigation bar includes 'Preferences', 'Download', 'Print', 'Help', 'Search', 'Result', and 'Statistics'. The 'Statistics' tab is active, showing 'Simple statistics' for the parameter 'Publication office'. The table lists 15 publication offices with their respective document counts and ranking percentages. The left sidebar shows 'My statistics' with two search results: 'Search 2 - 20 results (applications: 20)' and 'Search 1 - 1 698 271 results'. The bottom section shows 'Selected terms' and 'Query (GPI 2018/36 - search result: 1 698 271)' with the DFE [201806, 201808].

#	Publication office	Documents	Ranking (%)
1	<input type="checkbox"/> CN	949 892	55.93
2	<input type="checkbox"/> US	180 981	10.66
3	<input type="checkbox"/> JP	126 465	7.45
4	<input type="checkbox"/> EP	86 874	5.12
5	<input type="checkbox"/> KR	74 918	4.41
6	<input type="checkbox"/> WO	61 403	3.62
7	<input type="checkbox"/> BR	36 620	2.16
8	<input type="checkbox"/> TW	25 990	1.53
9	<input type="checkbox"/> RU	21 642	1.27
10	<input type="checkbox"/> DE	21 279	1.25
11	<input type="checkbox"/> CA	14 943	0.88
12	<input type="checkbox"/> AU	14 429	0.85
13	<input type="checkbox"/> GB	10 485	0.62
14	<input type="checkbox"/> ES	9 841	0.58
15	<input type="checkbox"/> MX	9 454	0.56

Selected terms:

Query (GPI 2018/36 - search result: 1 698 271)  
DFE [201806, 201808]

# ANNEX (live demo content)

DFE [201806, 201808] and PUC = CN

0,9 M CN publications with publication dates ranging from 2009 to 2018

DFE [201806, 201808] and PUC = CN andnot APP=\*

Preliminary search to assess data quality, i.e. to evaluate the risk of not retrieving relevant publications due to missing bibliographic data (possible missing applicants in this example)

DFE [201806, 201808] and PUC=CN and APP = "Siemens AG"

Low search result due to applicant names available only in Chinese language in recent publications

# ANNEX (live demo content)

Customise result list content to see Siemens AG in Chinese language (columns “Applicant” and “Applicant (original)” are added) and use Chinese name(s) in queries to improve result list completeness:

Result list		
Publication	Applicant	Applicant (ORIGINAL)
CN 108073130 A 20180525	SIEMENS AG	西门子公司
CN 108110728 A 20180601	SIEMENS AG	西门子公司
CN 108109887 A 20180601	SIEMENS AG	西门子公司
CN 207337496 U 20180508	SIEMENS AG	西门子公司
CN 108072819 A 20180525	SIEMENS AG	西门子公司
CN 207333301 U 20180508	SIEMENS AG	西门子公司
CN 207363713 U 20180515	SIEMENS AG	西门子公司
CN 207442384 U 20180601	SIEMENS AG	西门子公司

DFE [201806, 201808] and PUC=CN and APP = "Siemens AG" or 西门子公司

Simple families could be retrieved using only "Siemens AG" due to family members with "Siemens AG" in Latin alphabet but simple family picture sometimes limited to CN publications only with 西门子公司

# ANNEX (live demo content)

DFE [201806, 201808] and PUC=CN and APP = Siemens or 西门子\*

Wildcards can be used with names (right truncation in this example) to retrieve publications with Siemens AG or Siemens Healthcare or Siemens Sensors and Communications, etc.

# Thank you for your attention



[GPI Forum](#)

[Patent Information news](#)

[epo.org/gpi](http://epo.org/gpi) (user manual, free trial, subscription)

# Disclaimer

The content presented here is intended to give users of the patent system and patent information products a general overview of patent information and the respective products and services.

These learning units cannot go into all the details and specific features of the European Patent Office's products and services. Despite compiling the materials with the greatest care, the European Patent Office cannot guarantee their accuracy. This content does not constitute an official publication and cannot be used in any legal proceedings under the EPC or PCT.

Readers wishing to extend their knowledge are invited to consult the relevant publications of the European Patent Office ([www.epo.org](http://www.epo.org)) and other patent granting authorities.